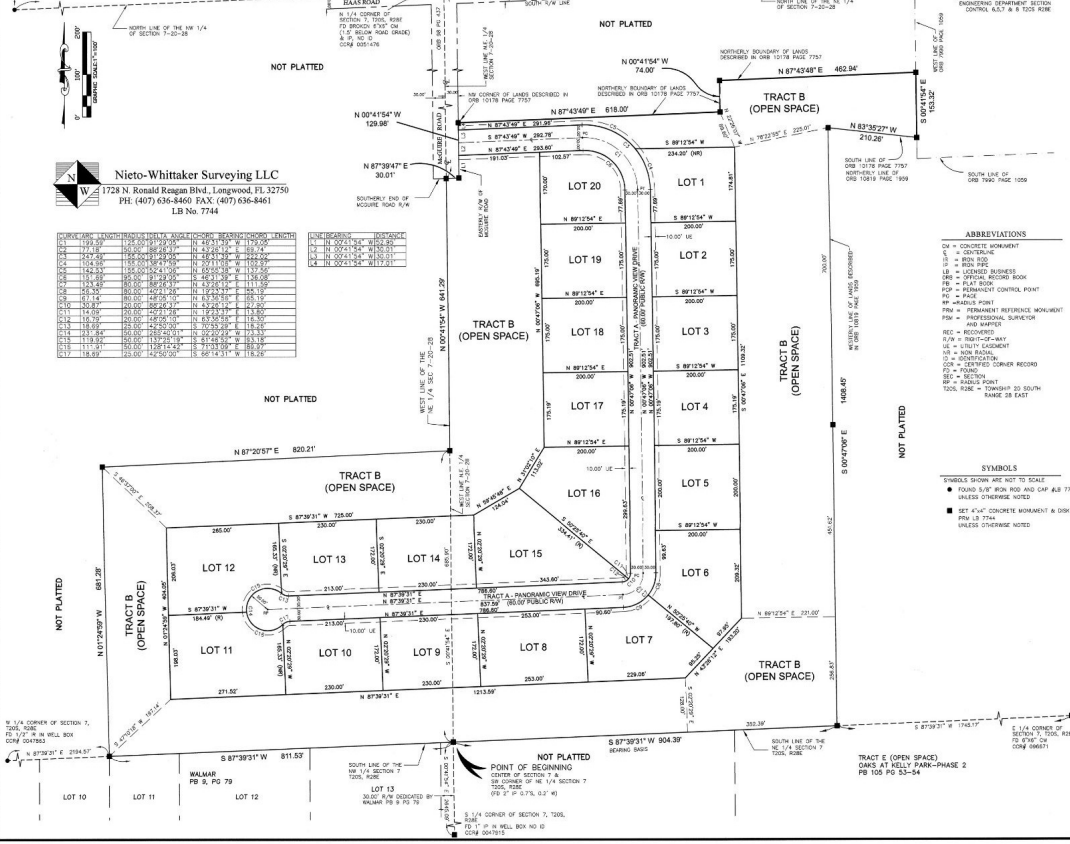


HILLTOP ESTATES AT RAINBOW RIDGE

LYING IN SECTION 7, TOWNSHIP 20 SOUTH, RANGE 28 EAST, ORANGE COUNTY, FLORIDA

NW CORNER OF SECTION 7, T20S, R28E, PG 77 OF 78 IN WELL BOOK COM 6601913

NE CORNER OF SECTION 7, T20S, R28E, PG 74 OF 75 IN WELL BOOK COM 6601913



Nieto-Whittaker Surveying LLC
1724 N. Ronald Reagan Blvd., Longwood, FL 32750
PH: (407) 636-8460 FAX: (407) 636-8461
LB No. 7744

LINE	BEARING	LENGTH	BEARING	LENGTH
1	N 87°39'31" W	811.53	S 87°39'31" W	811.53
2	N 87°39'31" W	811.53	S 87°39'31" W	811.53
3	N 87°39'31" W	811.53	S 87°39'31" W	811.53
4	N 87°39'31" W	811.53	S 87°39'31" W	811.53
5	N 87°39'31" W	811.53	S 87°39'31" W	811.53
6	N 87°39'31" W	811.53	S 87°39'31" W	811.53
7	N 87°39'31" W	811.53	S 87°39'31" W	811.53
8	N 87°39'31" W	811.53	S 87°39'31" W	811.53
9	N 87°39'31" W	811.53	S 87°39'31" W	811.53
10	N 87°39'31" W	811.53	S 87°39'31" W	811.53
11	N 87°39'31" W	811.53	S 87°39'31" W	811.53
12	N 87°39'31" W	811.53	S 87°39'31" W	811.53
13	N 87°39'31" W	811.53	S 87°39'31" W	811.53
14	N 87°39'31" W	811.53	S 87°39'31" W	811.53
15	N 87°39'31" W	811.53	S 87°39'31" W	811.53
16	N 87°39'31" W	811.53	S 87°39'31" W	811.53
17	N 87°39'31" W	811.53	S 87°39'31" W	811.53
18	N 87°39'31" W	811.53	S 87°39'31" W	811.53
19	N 87°39'31" W	811.53	S 87°39'31" W	811.53
20	N 87°39'31" W	811.53	S 87°39'31" W	811.53

- ABBREVIATIONS**
- CM = CONCRETE MONUMENT
 - CS = CONCRETE SURFACE
 - DB = DRAINAGE BOUNDARY
 - DRB = DRAINAGE BOUNDARY
 - EB = EXISTING BUSINESS
 - EBB = EXISTING BUSINESS BOUNDARY
 - EBD = EXISTING BUSINESS DRAINAGE
 - EBR = EXISTING BUSINESS ROAD
 - EBW = EXISTING BUSINESS WALKWAY
 - EBX = EXISTING BUSINESS X
 - EBY = EXISTING BUSINESS Y
 - EBZ = EXISTING BUSINESS Z
 - EBAA = EXISTING BUSINESS AREA
 - EBBB = EXISTING BUSINESS BOUNDARY
 - EBCC = EXISTING BUSINESS CENTER
 - EBDD = EXISTING BUSINESS DRAINAGE
 - EBEE = EXISTING BUSINESS EXISTENCE
 - EBFF = EXISTING BUSINESS FOUNDATION
 - EBGG = EXISTING BUSINESS GROUND
 - EBHH = EXISTING BUSINESS HILL
 - EBII = EXISTING BUSINESS INTERSECTION
 - EBJJ = EXISTING BUSINESS JUNCTION
 - EBKK = EXISTING BUSINESS K
 - EBLL = EXISTING BUSINESS L
 - EBMM = EXISTING BUSINESS M
 - EBNN = EXISTING BUSINESS N
 - EBOO = EXISTING BUSINESS O
 - EBPP = EXISTING BUSINESS P
 - EBQQ = EXISTING BUSINESS Q
 - EBRR = EXISTING BUSINESS R
 - EBSS = EXISTING BUSINESS S
 - EBTT = EXISTING BUSINESS T
 - EBUU = EXISTING BUSINESS U
 - EBVV = EXISTING BUSINESS V
 - EBWW = EXISTING BUSINESS W
 - EBXX = EXISTING BUSINESS X
 - EBYY = EXISTING BUSINESS Y
 - EBZZ = EXISTING BUSINESS Z

- SYMBOLS**
- SHADES DOWN ARE NOT TO SCALE
 - FOUND 5/8" IRON ROD AND CAP A.B. 7744
 - SHADES OTHERWISE NOTED
 - SET 4"x4" CONCRETE MONUMENT A DOWN
 - PG 13 7744
 - UNLESS OTHERWISE NOTED